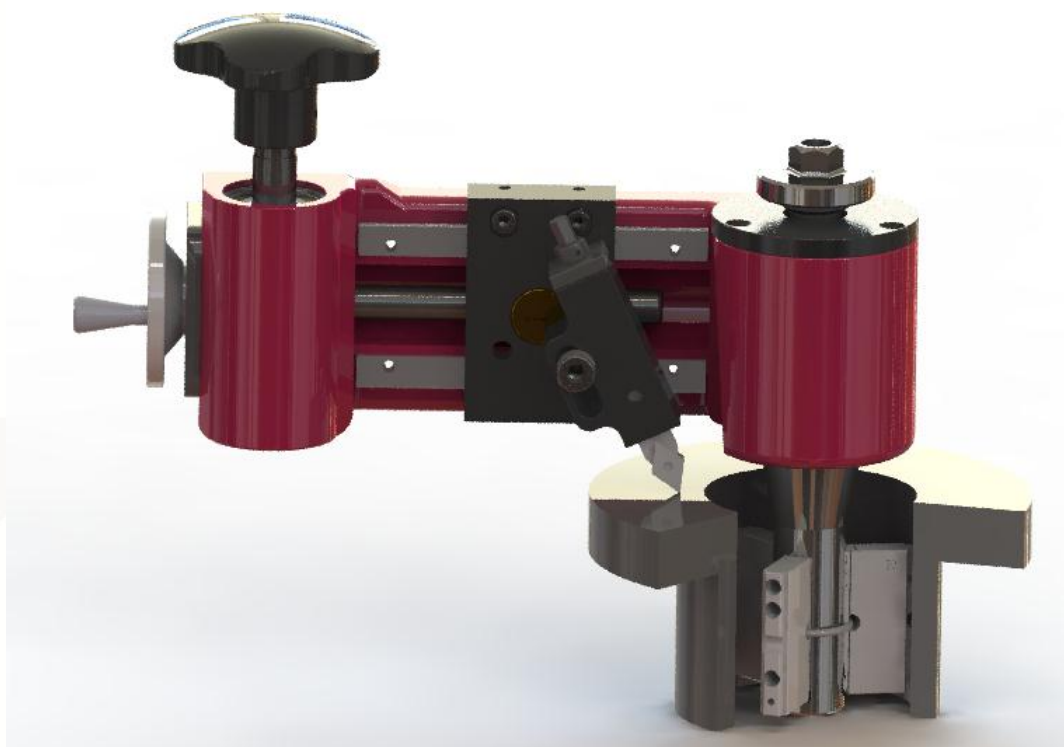




Shenzhen JOYSUNG Machines Co.,LTD

Instruction Manual

MFM350 Mini Flange facer



SHENZHEN JOYSUNG MACHINES CO.,LTD

Boring machine / Milling machine/ Welding machine /Flange facer



Catalogue

1. Notes

2. Description

3. Operational Process

4. MFM350 size

5. Packing list



1. Notes

Before using the machine must be carefully read the instructions, and packing list to inventory items, understand the operational safety precautions, machine performance and use of norms.

1.1. the operator must accept the safe operation training.

1.2. on the machine before the operation must work clothes, wear protective glasses.

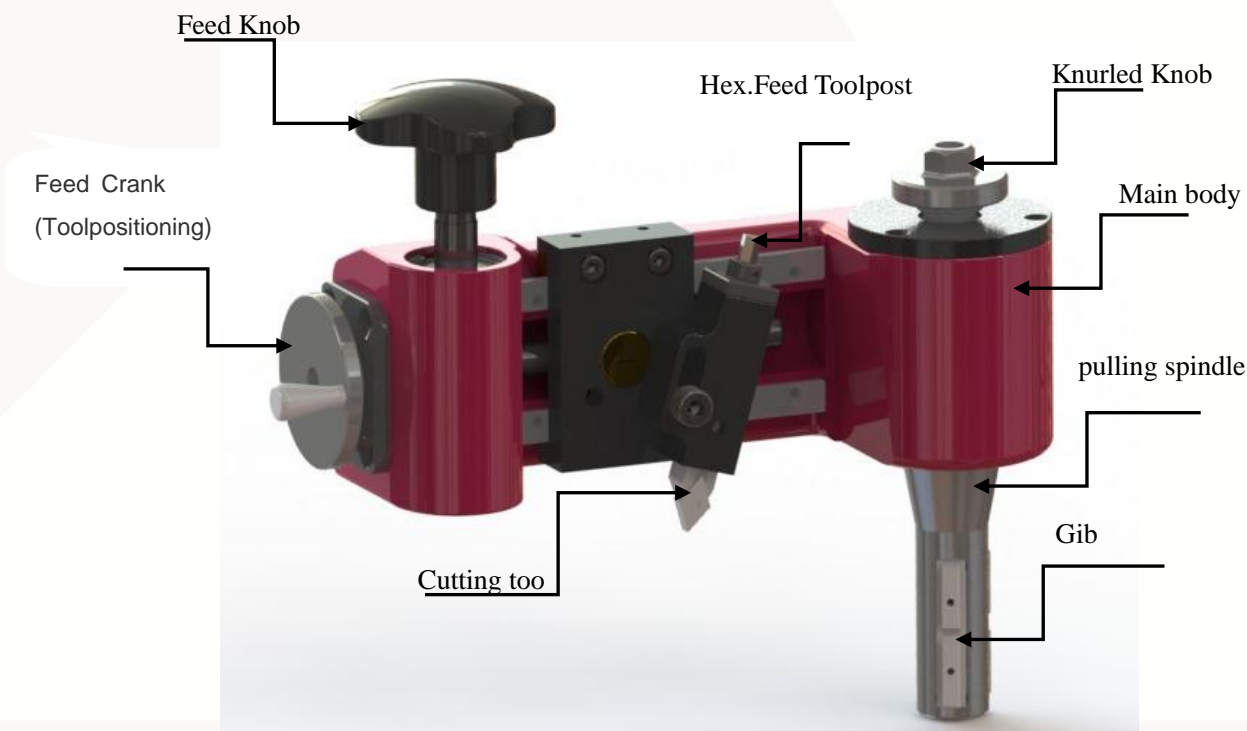
1.3. At working, ensure that the chuck is always firmly tightened.

1.4. after working, should remove the oil on the machine, iron cut, in the cone and cone parts of the sets of anti-rust oil spray.

1.5. should be based on maintenance manual requirements, good equipment protection.

2. Description

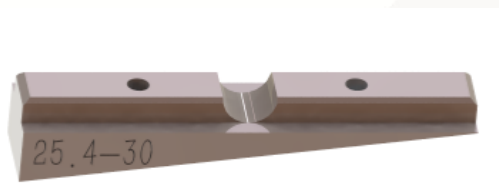
MFM350 is a manual drive flange facing repair machine.



2.1.MFM350 Flange machine has two feeding options, one to the flange smooth, another vehicle water lines.

Feed rod can be manually exchanged, according to the need to select the required Feed rod and nut. Selection of 1 wire water tank line, Feed rod 2 car smooth.

2.2.According to different flange hole selection of different block and gib.



Gib 1



Gib 2



Gib-1 The applicable range is 25.4-30mm, Gib-2 The applicable range is 30-35mm.

5 different size block: 5mm、10mm、20mm、50 mm、100 mm。

Select the desired block of rise depending on the flange diameter.



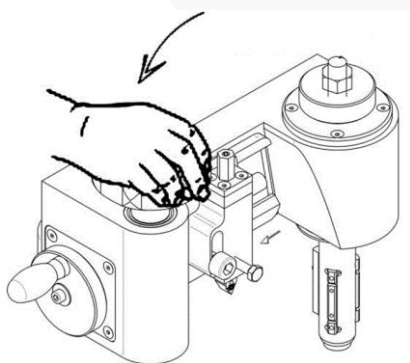
2.3.: processing range 25.4-350mm diameter flange。

2.4: Counterclockwise is the right work way

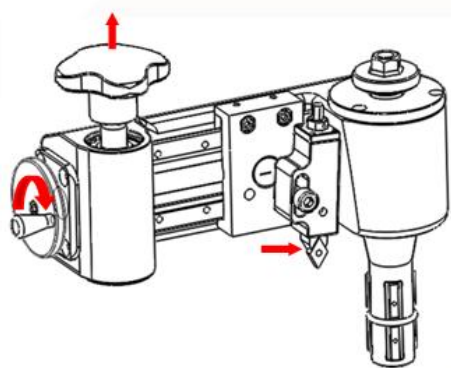


3. Operational Process

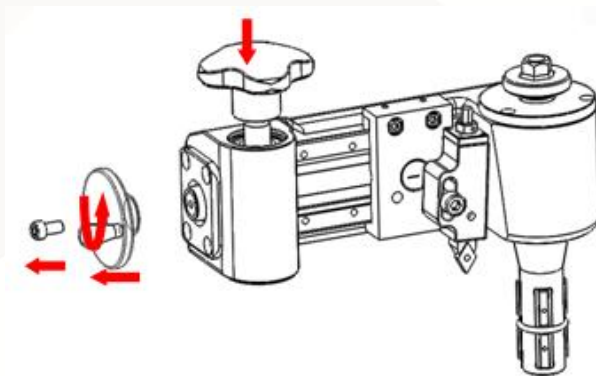
1. According to the processing requirements to select the Feed rod, install the Feed rod.
2. Measure the required flange hole, according to the hole diameter and select the gib and block.
3. Insert the conical sleeve into the flange, pull the anchor by pulling the bolt, Fixed flange machine, lock with a wrench.
4. Install the cutter head and cutter.
5. Rotate the handle to lift the worm and worm gear, shake the Feed rod hand wheel, Place the tool holder in the machining area and adjust the turning angle.
6. Return the rotary lever to start the work.
7. After processing, loosen the tightening bolts, remove the chuck and angle, clean up the iron filings, Into the toolbox.



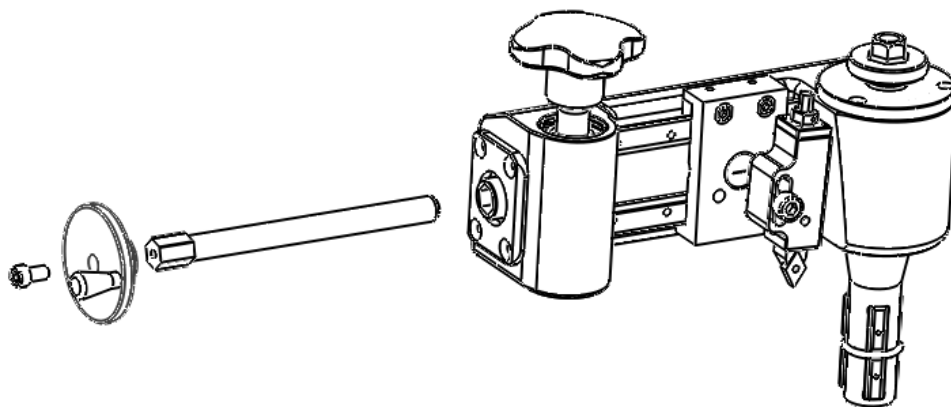
How to change Feed rod?



Step 1. Take up the Feed Knob, turn on the feed crank,
Put the cutter head at end right side, make feed rod out off with nut



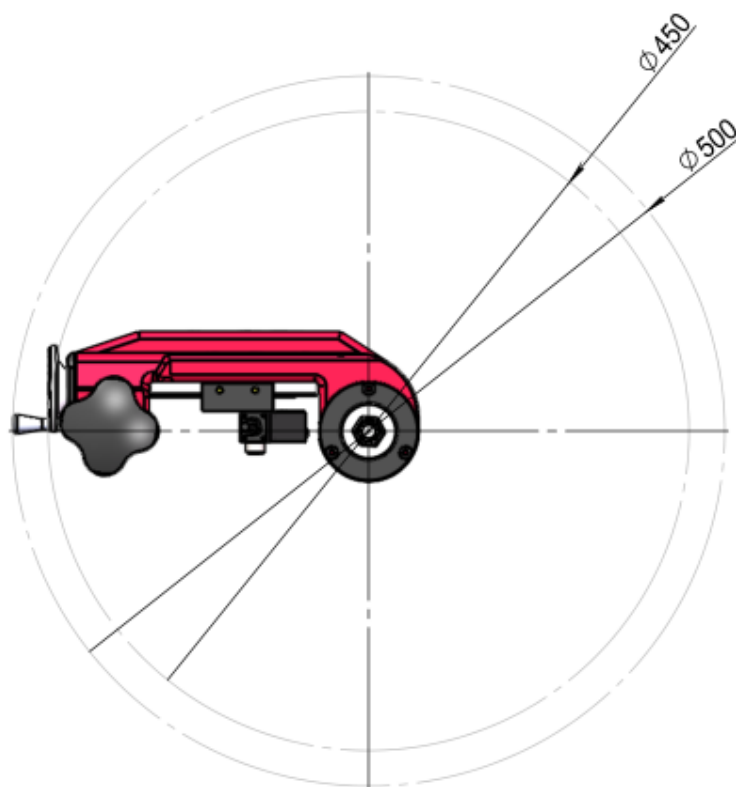
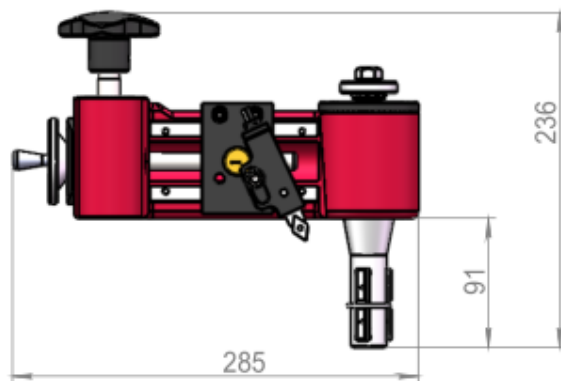
Step 2



Step 3. Take out the feed rod and change other feed rod



4. MFM350 size





5. Packing list

No.	Items	Qty
1	Main body	1 set
2	Feed rod and nut	2 set
3	Gib 1	3 pcs
4	Gib 2	3 pcs
5	5mm Block	3 pcs
6	10mm Block	3 pcs
7	20mm Block	6 pcs
8	50mm Block	3 pcs
9	100mm Block	3 pcs
10	Cutter head	1 set
11	Cutter	1 pcs
12	Tools	1 set
13	tension spring	2 pcs
14	Packing Box	1 set

SHENZHEN JOYSUNG MACHINES CO.,LTD

Lantian Industrial Park Haoxiang Road Shajing Town Shenzhen China

Tel:86755-33238068 Mobile: 86-18718683515

Toney Lee zxcjoysung@163.com

www.joysung.com